

KD-Validated Anti-Aconitase 2 Rabbit Monoclonal Antibody
Rabbit monoclonal antibody
Catalog # AGI2295**Specification**

KD-Validated Anti-Aconitase 2 Rabbit Monoclonal Antibody - Product Information

Application	WB, FC, ICC
Primary Accession	Q99798
Reactivity	Rat, Human, Mouse
Clonality	Monoclonal
Isotype	Rabbit IgG
Calculated MW	Predicted, 85 kDa , observed, 85 kDa KDa
Gene Name	ACO2
Aliases	ACO2; Aconitase 2; Aconitate Hydratase, Mitochondrial; ACONM; Aconitase 2, Mitochondrial; Mitochondrial Aconitase; Citrate Hydro-Lyase; EC 4.2.1.3 ; Epididymis Secretory Sperm Binding Protein Li 284; HEL-S-284; Aconitase ; EC 4.2.1; ICRD; OCA8; OPA9
Immunogen	A synthesized peptide derived from human Aconitase 2

KD-Validated Anti-Aconitase 2 Rabbit Monoclonal Antibody - Additional Information

Gene ID	50
Other Names	
Aconitate hydratase, mitochondrial, Aconitase, 4.2.1.3, Citrate hydro-lyase, ACO2	

KD-Validated Anti-Aconitase 2 Rabbit Monoclonal Antibody - Protein Information**Name** ACO2**Function**

Catalyzes the isomerization of citrate to isocitrate via cis- aconitate.

Cellular Location

Mitochondrion {ECO:0000250|UniProtKB:P16276}.

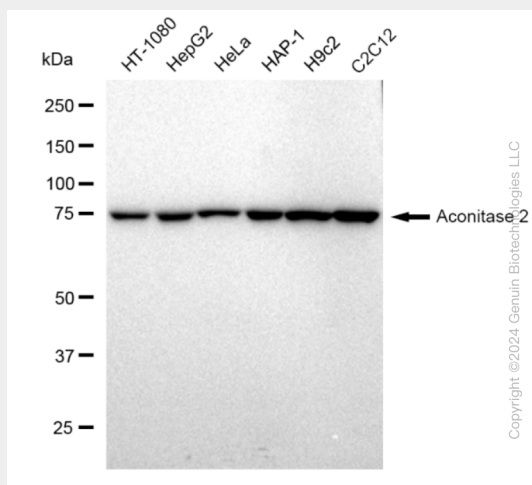
KD-Validated Anti-Aconitase 2 Rabbit Monoclonal Antibody - Protocols

Provided below are standard protocols that you may find useful for product applications.

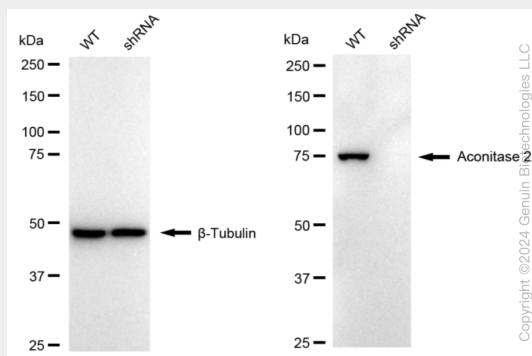
- [Western Blot](#)
- [Blocking Peptides](#)
- [Dot Blot](#)

- [Immunohistochemistry](#)
- [Immunofluorescence](#)
- [Immunoprecipitation](#)
- [Flow Cytometry](#)
- [Cell Culture](#)

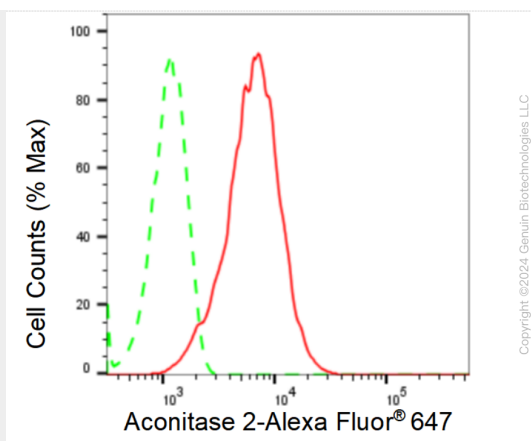
KD-Validated Anti-Aconitase 2 Rabbit Monoclonal Antibody - Images



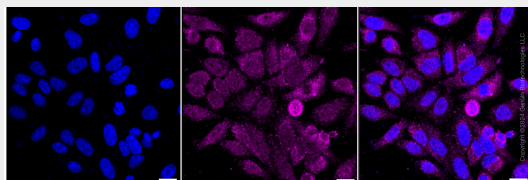
Western blotting analysis using anti-Aconitase 2 antibody (Cat#AGI2295). Total cell lysates (30 µg) from various cell lines were loaded and separated by SDS-PAGE. The blot was incubated with anti-Aconitase 2 antibody (Cat#AGI2295, 1:5,000) and HRP-conjugated goat anti-rabbit secondary antibody respectively.



Western blotting analysis using anti-Aconitase 2 antibody (Cat#AGI2295). Aconitase 2 expression in wild type (WT) and Aconitase 2 shRNA knockdown (KD) HeLa cells with 20 µg of total cell lysates. β-Tubulin serves as a loading control. The blot was incubated with anti-Aconitase 2 antibody (Cat#AGI2295, 1:5,000) and HRP-conjugated goat anti-rabbit secondary antibody respectively.



Flow cytometric analysis of Aconitase 2 expression in HepG2 cells using Aconitase 2 antibody (Cat#AGI2295, 1:2,000). Green, isotype control; red, Aconitase 2.



Immunocytochemical staining of HepG2 cells with anti-Aconitase 2 antibody (Cat#AGI2295, 1:1,000). Nuclei were stained blue with DAPI; Aconitase 2 was stained magenta with Alexa Fluor® 647. Images were taken using Leica stellaris 5. Protein abundance based on laser Intensity and smart gain: Medium. Scale bar: 20 μ m.